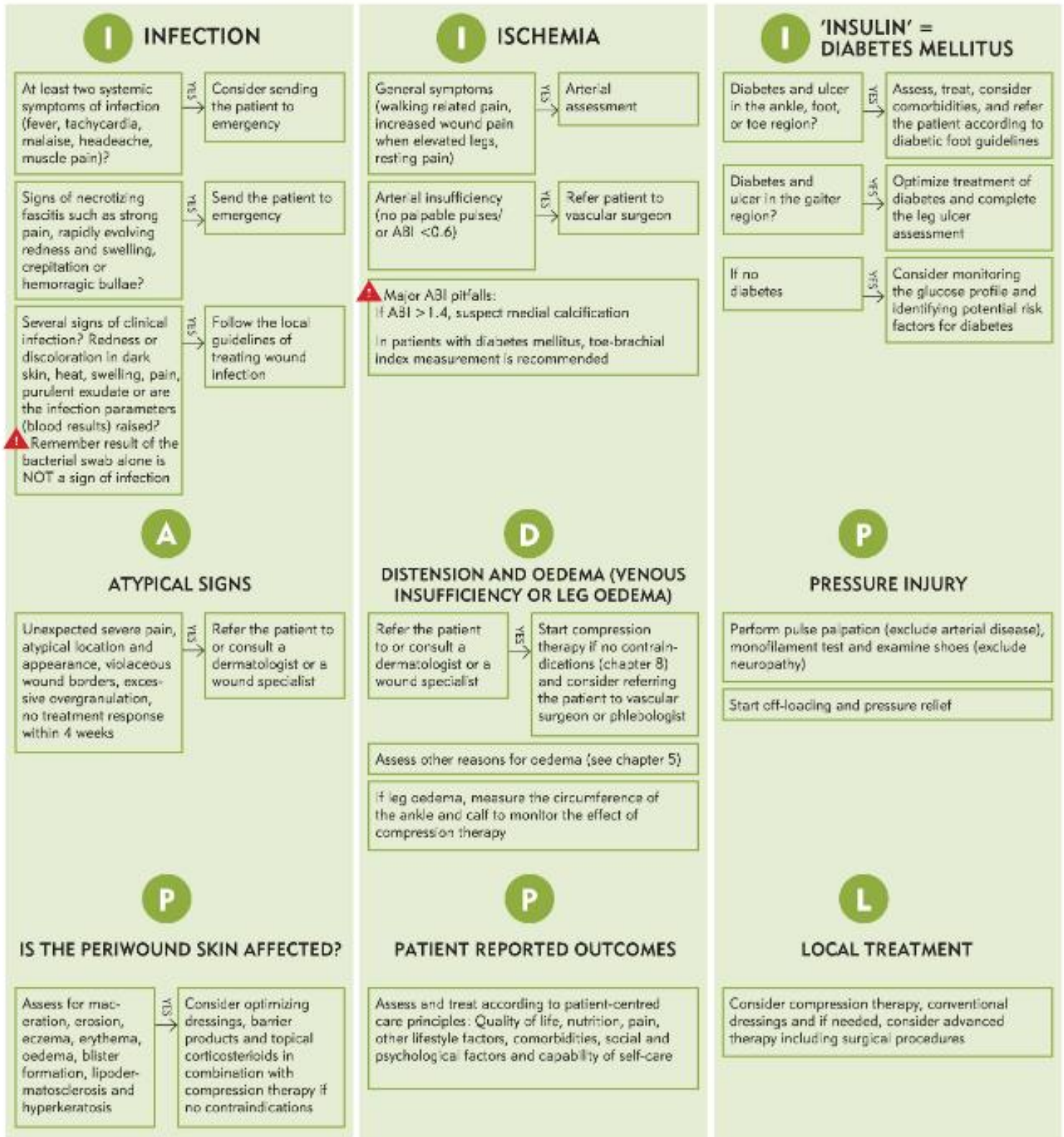


Assessment, Diagnosis and Referral Pathway for Patients with Lower Leg Ulcers

The rule of three Is, ADP and PPL



Salava A, Ischerranen K. Rule of three I's: a mnemonic aid in undergraduate teaching of lower limb wounds. *J Wound Care* 2021 Dec 2;30(12):1030
 Salava A, Ischerranen K. A useful addition to the mnemonic rule of the three Is: ADP-atypical wounds, distension and pressure ulcers. *J Wound Care*. 2023 May 2;32(5):329.



ABI = ankle-brachial index