

Referring Doctor assesses & stabilises burn patient & completes **Burn Referral Form**
<http://www.nationalburncentre.co.nz/pdf/referralform.pdf>

National Burn Service Referral Form (for use for both NBC & RBU)
<http://www.nationalburncentre.co.nz/pdf/referralform.pdf>
 – fax to NBC 09 276-0114
 – include with notes to RBU

Referral Criteria for National Burn Centre

- Burns >30% total body surface area
- Full thickness burns to
 - face, hands, feet, genitalia, perineum
- Burn injury with significant inhalation injury
- High voltage electrical burns
- Significant chemical burns

On-Call Burn Coordinator NBC

Phone: 09 250-3800
 Fax: 09 276-0114
 Email: oncallburnsnurse@middlemore.co.nz

Referral Criteria for Regional Burn Unit

- Burns >10% total body surface area (TBSA) or 5% in a child
- Burns to special areas
 - face, hands, feet, perineum, over major joints
- Full thickness burns >5% TBSA
- Circumferential burns of the limbs or chest
- Burn injury with inhalation injury
- Electrical burns
- Chemical burns
- Burn injury in patients at the extremes of age
 - children and elderly
- Burn injury in patients with pre-existing medical disorders which could complicate management, prolong recover or affect mortality
- Any burn patient with associated trauma in which the burn injury poses the greater immediate risk of morbidity or mortality
- Any burn suspected with abuse

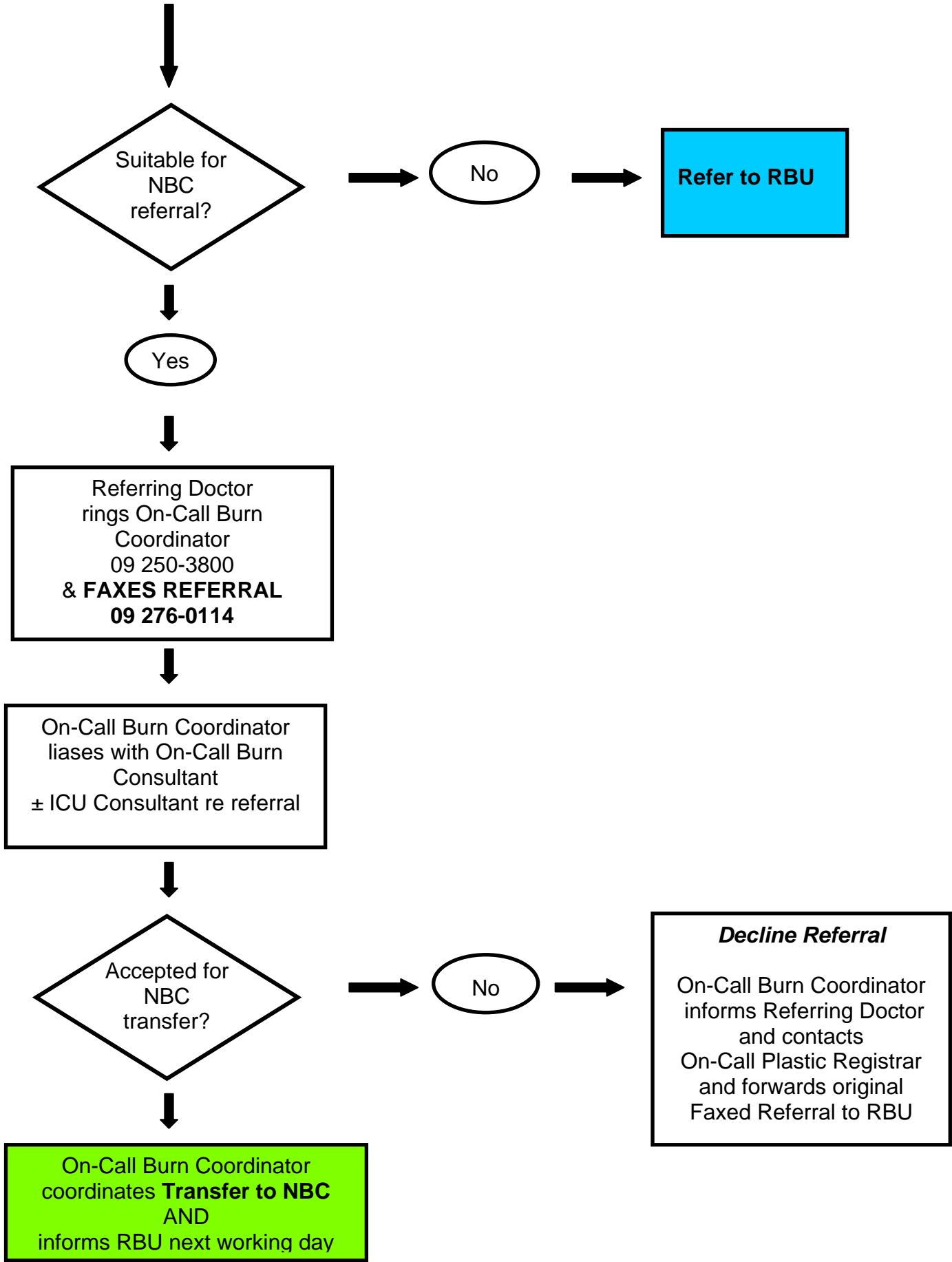
Regional Burn Centre Contacts
call the on-call plastic surgery registrar

Middlemore Hospital
 09 276 0000 / 021 784 057

Waikato Hospital
 07 839 8899

Hutt Hospital
 04 570 9999

Christchurch Hospital
 03 364-0640



Suitable for NBC referral?

No

Refer to RBU

Yes

Referring Doctor rings On-Call Burn Coordinator 09 250-3800 & FAXES REFERRAL 09 276-0114

On-Call Burn Coordinator liaises with On-Call Burn Consultant ± ICU Consultant re referral

Accepted for NBC transfer?

No

Decline Referral
 On-Call Burn Coordinator informs Referring Doctor and contacts On-Call Plastic Registrar and forwards original Faxed Referral to RBU

On-Call Burn Coordinator coordinates **Transfer to NBC** AND informs RBU next working day